

Midi Industrial relay

Type RPY 1 16A

Monostable



- High switching power
- Small size
- Wide range of applications
- 16A switching capacity
- 1 pole with 2 terminals
- Flanged (blade) pins 5mm
- DC coils from 6 to 240V
- AC coils from 6 to 380V
- High sensitivity
- Conforms to CE low voltage directive
- UL, CSA, TUV approved

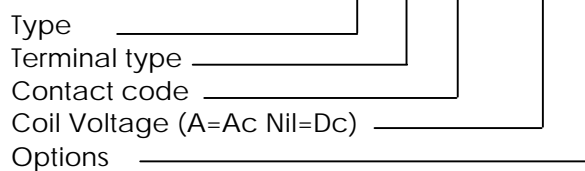
Product Description

The RPY relay can be used for a wide range of industrial applications.

Available in 1, 2, 3, 4 pole change-over contact configuration. Its wide terminals allow reliability big currents.

Ordering Key

RPY A 001 A24 L



Approvals



- Options!:
- Nil = Standard
 - L = LED
 - T = Test Button
 - G = Gold Plated contacts
 - D = Free Wheeling diode
 - F = Flange Mount
 - F1= lateral flange

Terminal type: A= Plug in terminals, blades
B= PCB terminals

Type Selection

Contact configuration	Contact rating	Contact code
1 change over contact (DPDT- 1form C)	16A	001

Coil Characteristics, DC (@25 °C), coil power 900mW

Nominal Voltage VDC	Pick-up Voltage VDC	Drop-out Voltage VDC	Max.Allowed Voltage VDC	Coil Current mA	Coil Resistance W
6	4.5	0.60	6.6	150	40
9	6.75	0.90	9.9	100	90
12	9	1.20	13.2	75	160
24	18	2.40	26.4	36.9	650
36	27	3.60	39.6	24	1500
48	36	4.80	52.8	18.5	2600
100	75	10	110	9.09	11000
110	82.5	11	121	10	11000
220	165	22	242	5.24	42000
240	180	24	264	3.75	64000

Specifications are subject to change without notice.



Coil Characteristics, AC (@25 °C), coil power 1.2VA

Nominal Voltage VAC	Pick-up Voltage VAC	Drop-out Voltage VAC	Max. Allowed Voltage VAC	Coil Current mA		Coil Resistance W
				50Hz	60Hz	
6	4.8	1.8	6.6	230	200	11.5
12	9.6	3.6	13.2	120	100	40
24	19.2	7.2	26.4	57.5	50	160
36	28.8	10.8	39.6	38	33	370
48	38.4	14.4	52.8	28.75	25	600
110	88	33	121	12.7	11	3750
120	96	36	142	11.5	10	3900
220	176	66	242	6.3	5.5	13000
240	192	72	264	5.75	5	18790
380	304	114	418	3.62	3.15	42000

Contact Characteristics

Contact Rating (With resistive load)	16A - 250VAC	Max Switching Power	4000VA / 450W
Usually rating	16A-250VAC / 28VDC	Life	
Material	AgSnO ₂	Electrical life	1x10 ⁵ cycles (3600 ops/h)
Contact Resistance	50mW	Mechanical	1x10 ⁷ cycles (18000 ops/h)
Current		UL/CSA ratings	1/2Hp 110Vac
Max. switching current	16A		1Hp 220Vac

Insulation

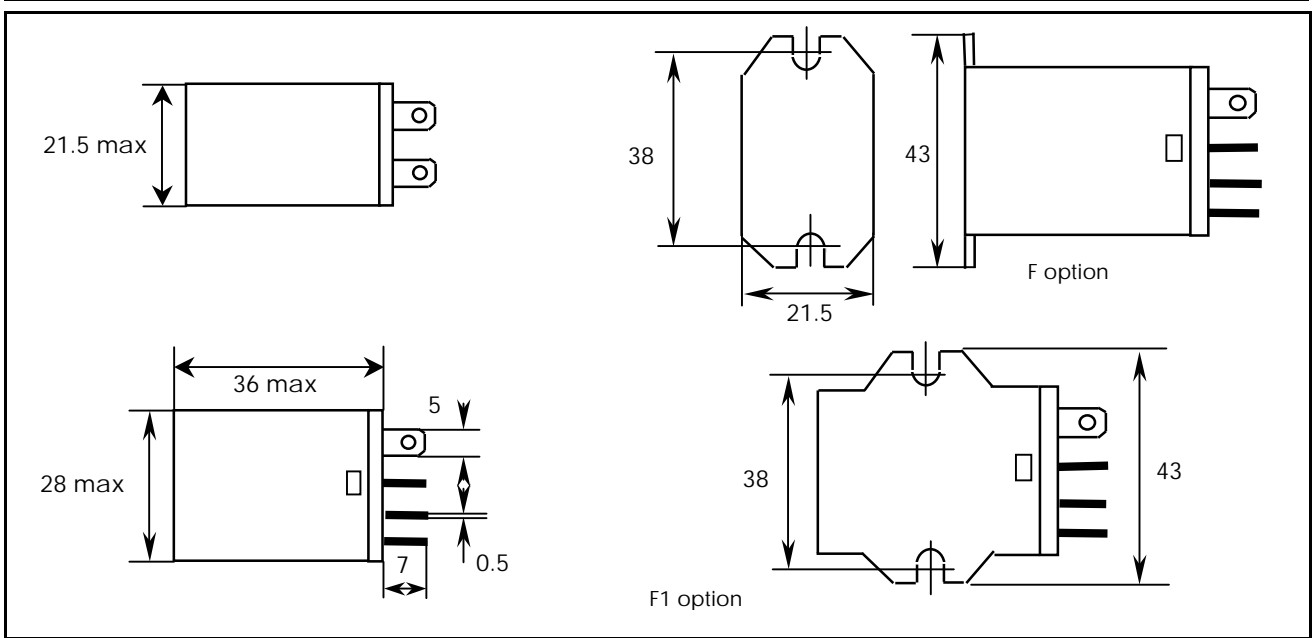
Test voltage(1min.)		Insulation	
Between coil and contacts	2000VAC	According to EN61810-5	
Between open contacts	1200VAC	Rated insulation voltage	250V
Contact / contact	1200VAC	Impulsive insulation	2KV
Insulation resistance	1000MW - 500V	Overvoltage category	II

General Data

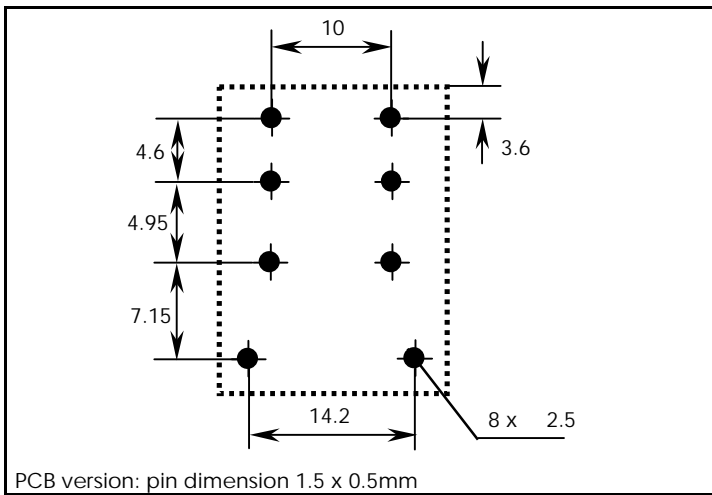
Nominal coil power	0.9W DC - 1.2VA AC	Vibration resistance	10 to 55Hz 1mm
Operating time	20ms	Shock resistance	
(at nominal voltage)		Functional	98m/s ² (10G)
Release time	20ms	Termination	Flanges (blades) 5 mm
(at nominal voltage)		Construction	Dust cover
Ambient temperature	- 25°C to + 55°C	Weight	35g
Ambient humidity	35% to 85%		



Dimensions (mm)

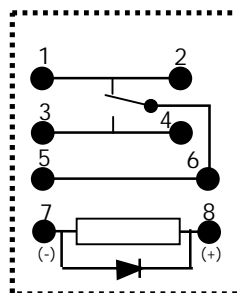
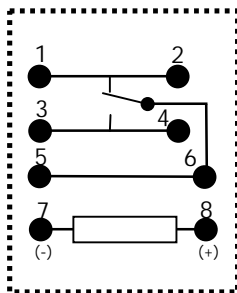


Pin View

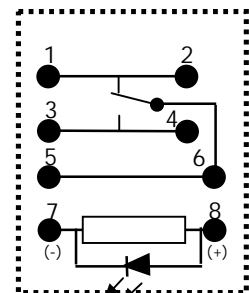


PCB version: pin dimension 1.5 x 0.5mm

Wiring diagram



D option



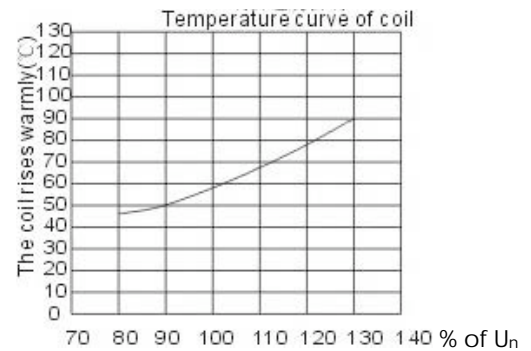
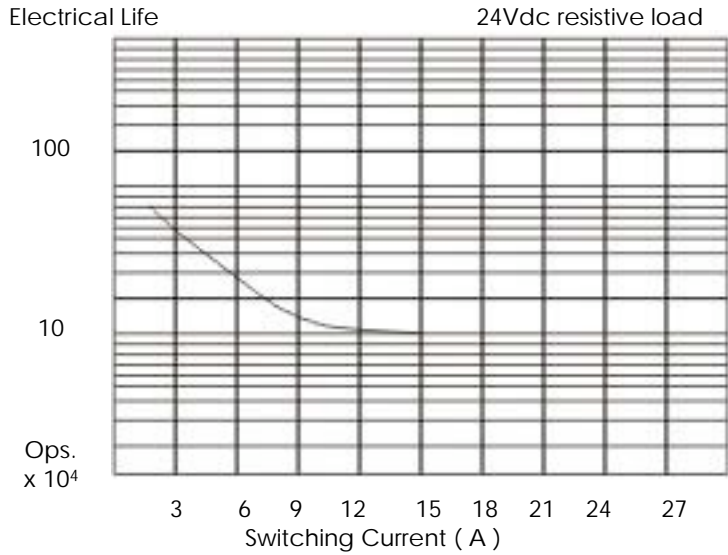
L option

Specifications are subject to change without notice

Midi Industrial relay
Type RPY 1 16A
Monostable



Diagrams



Bases and Sockets

For RPY sockets refer to page xxx of general catalogue

Specifications are subject to change without notice