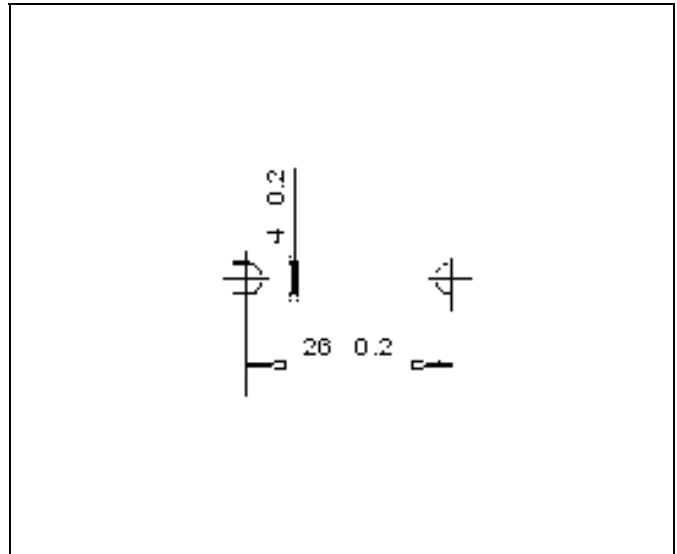
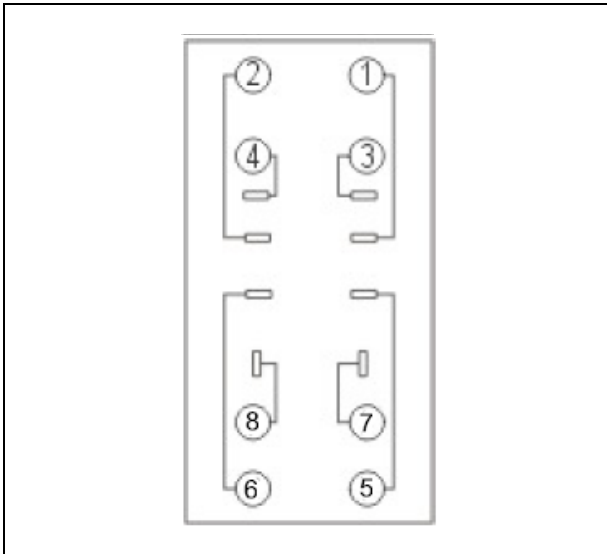
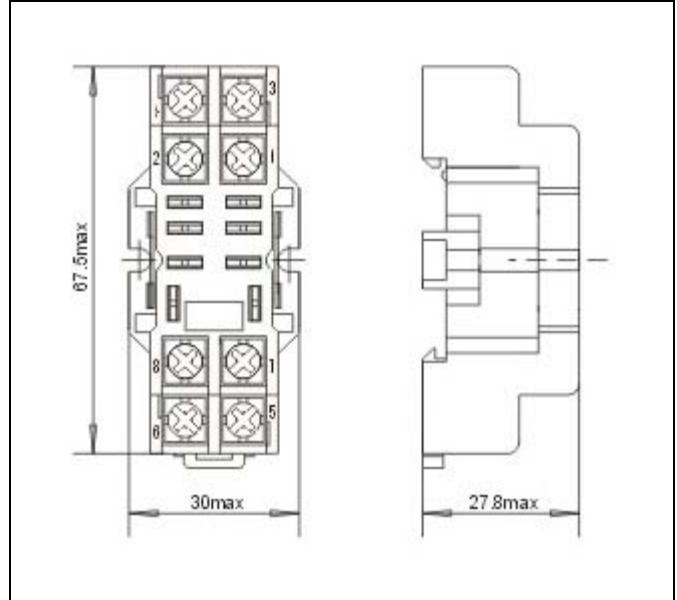
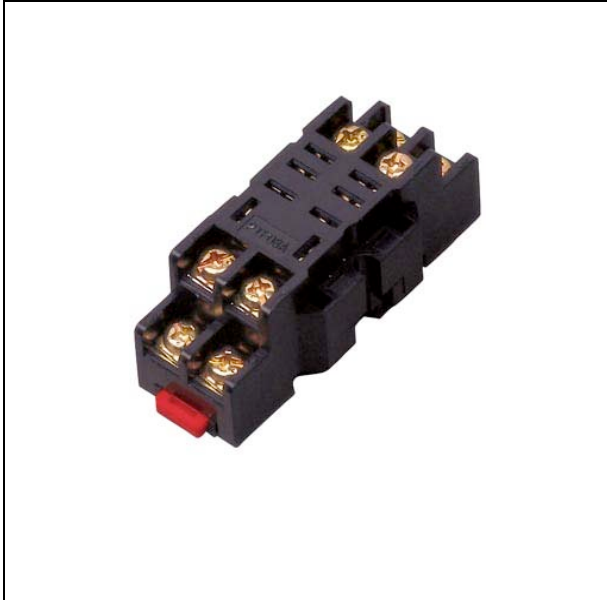


Sockets for RPY series relays

ZPY08

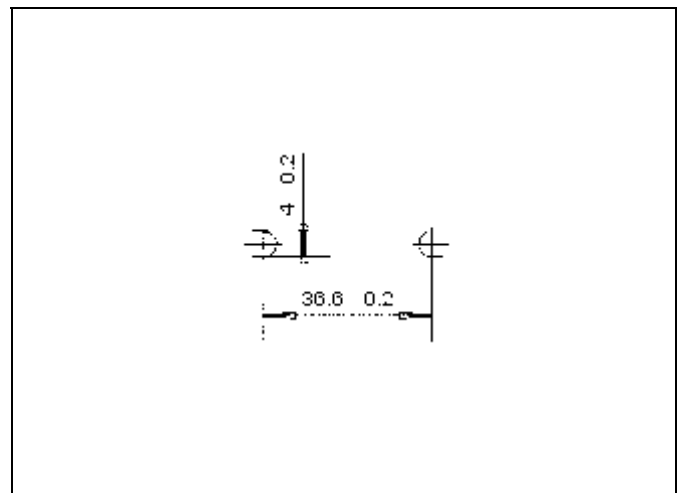
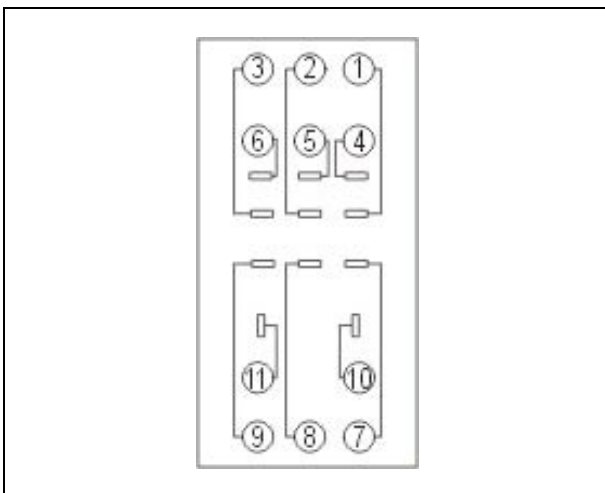
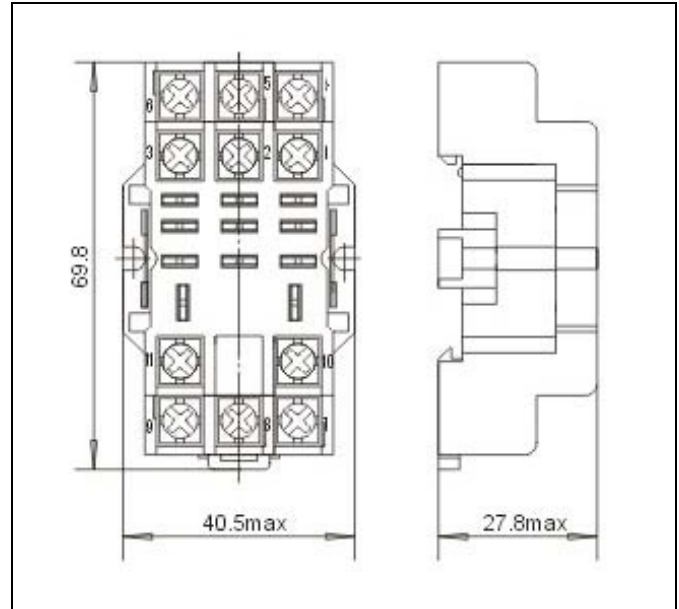


For DIN-rail mounting (DIN 46277-3) or by screws on chassis.

Rated voltage	300Vac
Rated current	10 A
Insulation voltage	>4kV
Protection degree	IP00
Socket material	Self extinguishing PA66
Contact material	Nickel plated - Cu Zn 33
Hold-down spring (opt.)	Steel
Approvals	CSA, UL

Sockets for RPY series relays

ZPY11

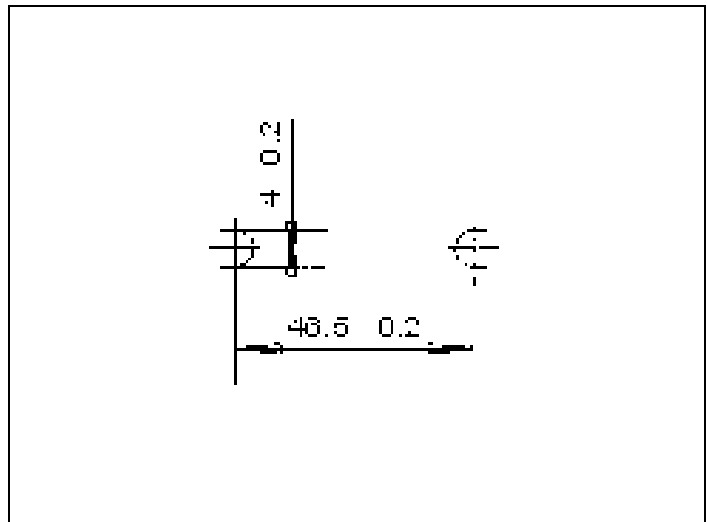
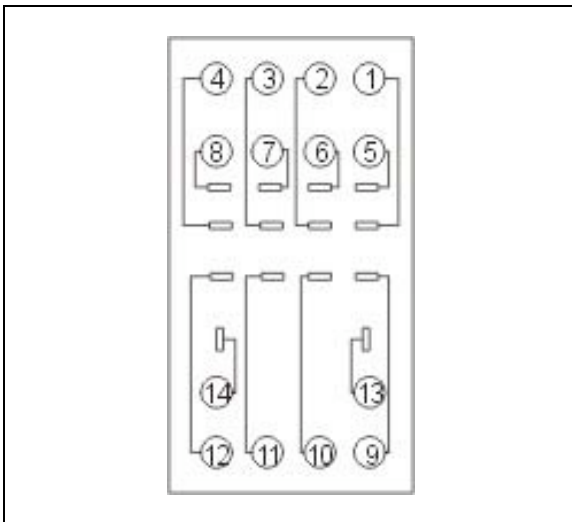
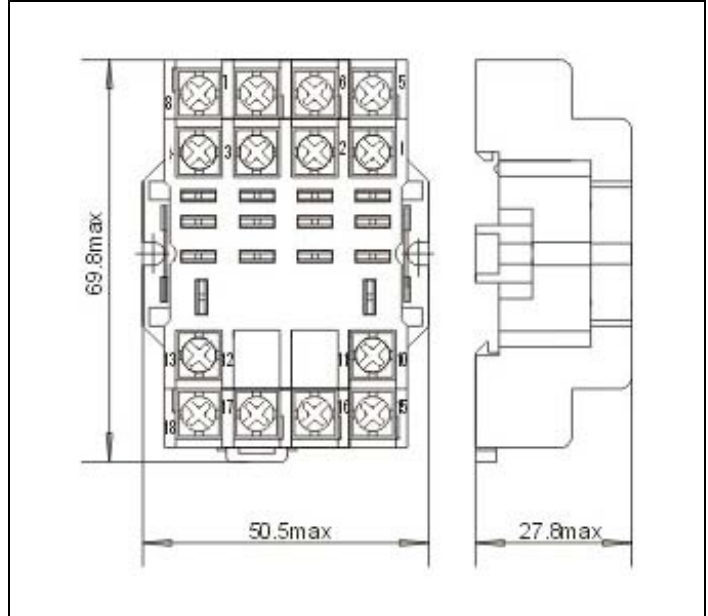


For DIN-rail mounting (DIN 46277-3) or by screws on chassis.

Rated Voltage	300Vac
Rated current	10A
Insulation voltage	>4kV
Protection degree	IP00
Socket material	Self extinguishing PA66
Contact material	Nickel plated – Cu Zn 33
Hold-down spring (opt.)	Steel
Approvals	CSA, UL

Sockets for RPY series relays

ZPY14



For DIN-rail mounting (DIN 46277-3) or by screws on chassis.

Rated voltage	300Vac
Rated current	10 A
Insulation voltage	>4kV
Protection degree	IP20
Socket material	Self extinguishing PA66
Contact material	Nickel plated - Cu Zn 33
Hold-down spring (opt.)	Steel - code
Approvals	CSA, UL